

苏尔寿泵业

Sulzer Pumps



苏尔寿泵业是一个全球领先的泵产品的制造商，其主要产品是离心泵、搅拌器和混合器。我们的核心市场领域包括：石油及天然气、石油化工、造纸、电站、供水、污水处理、食品加工、冶金及化肥等。我们的产品以其卓越的技术性能而闻名于世。我们一流的制造厂分布在世界各大洲，并在150多个国家设置了办事处和服务中心。

Sulzer Pumps is one of the worlds leading pump manufacturers. Our focus is specialized centrifugal pumps and agitators/mixers for the Oil & Gas, Hydrocarbon Processing, Pulp & Paper, Power Generation, Water & Wastewater and Food, Metals & Fertilizer markets. Our products are internationally reputed for their technical excellence. Our state-of-the-art manufacturing facilities are located on all continents with sales offices, service centers and representatives in more than 150 countries around the globe.

苏州苏尔寿泵业生产能力

Suzhou Manufacturing Capacity



集苏尔寿泵业工厂精益管理之精髓，确保了具有竞争力的卓越运营，以满足苏尔寿全球标准所要求的高品质产品和可靠交货期
主要为电力和石油天然气市场提供一流的工程泵
8个试验台位，最大输出功率达15000千瓦

Integrating the best practices based on LEAN principles from other major Sulzer Pumps manufacturing facilities, competitive operational excellence is ensured to meet Sulzer's global standards for high quality with reliable delivery times.

Focus on advanced engineered pumps for Power Generation and Oil & Gas applications

8 test-bed stations with 15 MW power supply



SPSZH workshop layout by Lean Concept

An engineered layout to achieve maximum productivity

- Total production area: 1,787m² → 3,256m², 82% increased.
- 5 major production cells were created.
- The 5 cells separated by pump type but also can flexible manufacturing



Production Capacity



MC/MD/GSG Production Cell:

- Production area: 706m²
- Pumps produced in 2012: 99 units
- Maximum monthly output in 2012: 26 units
- Transferred from SPCN



BBTD/CD Production Cell:

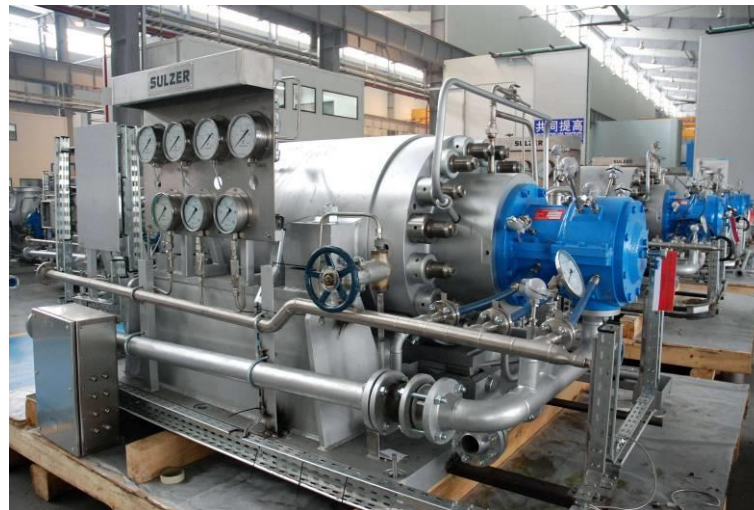
- Production area: 626m²
- Pumps produced in 2012 : 68 units
- Maximum monthly output in 2012: 14 units
- Transferred from SPCN

Production Capacity



MSD/HSB Production Cell:

- Production area: 842m²
- Pumps produced in 2012: 81 units
- Maximum monthly output in 2012: 17 units
- Transferred from SPUSA



HPT/HZB Production Cell:

- Production area: 742m²
- Pumps produced in 2012: 56 units
- Maximum monthly output in 2012: 5 units
- Transferred from SPUK

Test Bed and Machining



Test Beds:

- 4 test beds, total floor area: 2,520 m²
- Total pump tested 2012: 315 units
- Maximum monthly tested in 2012: 48 units
- Pumps flow up to 12,000 m³/h
- Pumps head up to 620 bar
- Power up to 10,000kW
- Cooling capacity up to 15,000kW
- Wet pit depth 9m



Machining Cells:

- Total floor area: 2,280 m²
- Machining capacity:
 - Impeller: 2,690 Pcs/Year
 - Diffuser: 2,690 Pcs/Year
 - Split casing: 90 Units/Year
 - Barrel: 80 Units/Year

Split Case Cell Productivity Improvement



- 6 carbon steel cases can be machined per month
- Doubling of productivity from 6 to 10 as target with improved shop floor supervision and technical improvements in cutting feeds and speeds

Delivered Projects and Pumps



Project Name:

CNOOC Lufeng 7-2 Oil Field Development

Service Name:

Crude Oil Export Pump

Pump Type:

4 off MSD2 3x6x9E/7s



Project Name:

Shenhua Baotou Coal Chemical Industry Thermal Power Plant

Service Name: Boiler Feed Pump

Pump Type: 2 off GSG 200-400/4B+3B

Delivered Projects and Pumps



Project Name:

Bulian Power Plant

Service Name: BFP

Pump Type:

2 sets of BFP consist of HPT+ Gearbox + HZB

1 set of Start-Up BFP consist of GSG + Motor



Project Name: Amarkantak/Babandh/Vidarbha
2X660MW Power Projects

Service Name: BFP Pumps

Pump Type:

6 off HPT 300-355/6STG;

6 off HZB 253-640

Delivered Projects and Pumps



Project Name:

4 pipelines for crude oil transit

Service Name: Crude Oil Transit

Pump Type: 34 off MSD/HSB pump



SPSZH Achivements of Large Thermal Power Plant



SPSZH Achievements of Large Thermal Power Plant

HPT Orders Booked By SPSZH						
Client	Unit Capacity	Delivery Location	Order Date	Pump Capacity	Booster Pumps	Main Feed Pumps
Bulian	2X660MW Supercritical	China	2009/11/11	1X100%	2 x HZB 352-670	2 x HPT 400-450-5S
Lanco 1	2X660MW Supercritical	India	2010/4/14	3X50%	6 x HZB 253-640	6 x HPT 300-355-6S
Lanco 2	2X660MW Supercritical	India	2010/10/1	3X50%	6 x HZB 253-640	6 x HPT 300-355-6S
Lanco 3	2X660MW Supercritical	India	2010/10/1	3X50%	6 x HZB 253-640	6 x HPT 300-355-6S
Lanco 4	2X600MW Subcritical	India	2011/5/23	3X50%	6 x HZB 253-640	6 x HPT 300-330-5S
Datang Huaibei Hushan	2X660MW Supercritical	China	2011/11/30	2X50%	4 x HZB 253-640	4 x HPT 300-340-6S
Singhtarai	2X600MW Subcritical	India	2012/4/27	3X50%	4 x HZB 253-640	6 x HPT300-330-5S
Bosnia Herzegovina	1X300MW Subcritical	Bosnia	2012/5/28	3X50%	3 x ZE 250-5560	3 x HPT175-280-6S
CMEC	2X630MW Subcritical	Iraq	2012/10/23	2X50%	4 x HZB 303-720	4 x HPT 300-330-5S
CMEC	2X630MW Subcritical	Iraq	2012/10/24	2X30%	4 x ZE 250-5560	4 x HPT 200-320-5S
Datang Wushashan	2X1000MW Supercritical	China	2012/12/10	2X50%	4 x HZB 303-720	4 x HPT400-390-6S
Dapu	2X660MW Supercritical	China	2012/12/27	1X100%	2 x HZB 352-760	2 x HPT 400-420-5S
Hami	4X660MW Supercritical	China	2013/1/11	2X50%	8 x HZB 253-640	8 x HPT 300-340-6S
Wanzhou	2X1000MW Supercritical	China	2013/3/24	1X100%	2 x HZB 402-720	2 x HPT 400-485-5S
Shazhou	2X1000MW Supercritical	China	2013/4/28	2X50%	4 x HZB 303-720	4 x HPT400-390-6S
Pingshan	2X660MW Supercritical	China	2013/5/29	1X100%	2 x HZB 352-760	2 x HPT 400-450-6S
Anqing	2X1000MW Supercritical	China	2013/6/3	2X50%	4 x HZB 303-720	4 x HPT400-390-6S
Tongling	1X1000MW Supercritical	China	2013/10/28	2X50%	4 x HZB 303-720	4 x HPT400-390-6S
Jiujiang	2X1000MW Supercritical	China	2013/11/28	1X100%	2 x HZB 402-720	2 x HPT 400-485-5S
Sanmenxia	2X1000MW Supercritical	China	2014/1/15	1X100%	2 x HZB 402-720	2 x HPT 400-485-5S
Chiping	6X700MW Supercritical	China	2014/1/25	2X50%	12 x HZB 253-640	12 x HPT 300-355-6S
Chiping	6X700MW Supercritical	China	2014/1/25	1X30%	6 x ZE 250-5560	6 x HPT 200-330-6S
Meizhouwan	2X1000MW Supercritical	China	2014/2/20	2X50%	4 x HZB 303-720	4 x HPT400-390-6S
Banji	2X1000MW Supercritical	China	2014/2/20	2X50%	4 x HZB 303-720	4 x HPT400-390-6S

SPSZH ES Products Portfolio



MD/MC



CD



HZB



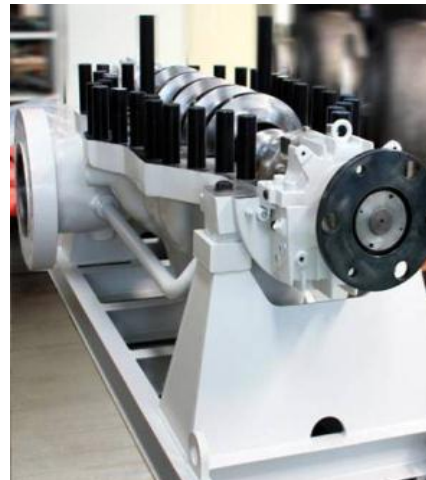
HPT



GSG



BBT-D



MSD/HSB



HPTd- Nuclear

on